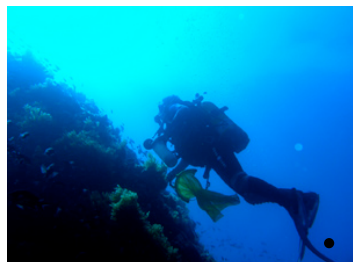


TECHNOLOGY PLATFORMS

The UPVD has three technology platforms:

BIO2MAR: BIODIVERSITY AND MARINE BIOTECHNOLOGIES

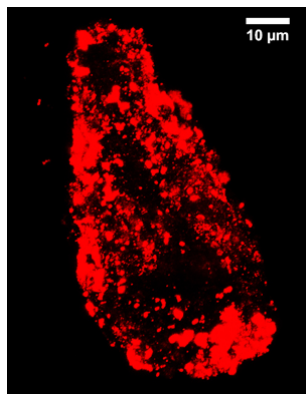


The Bio2Mar platform is a regional structure that provides companies and the public research community in the Languedoc-Roussillon region with high-performance technological resources for investigating biodiversity and marine biotechnologies. It forms part of a leading overall regional analytical cluster that conducts analysis into marine microorganisms and biomolecules with a view to exploiting them. Priority is given to initiatives that focus on research into the Sea and Coast.

- Joint research projects: CNRS - UPVD - UPMC
- Pilot laboratories: [CRIOBE](#), [Banyuls-sur-Mer Oceanological Observatory](#)
- Scientific areas: microbial ecology, human health, environmental quality and biotechnologies, chemical ecology.
- Equipment: 5 technical facilities (biodiversity, isolation and culture, biomass, biomolecules, secondary and xenobiotic metabolites).

[more info](#)

TECNOVIV

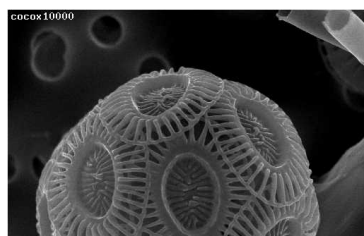


This platform pools a number of technical resources which are available to the UPVD's biology research centres, as well as all potentially interested research units and companies throughout the Languedoc-Roussillon region.

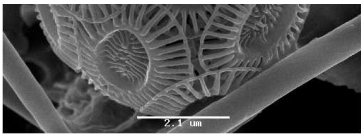
- Joint research projects: UPVD
- Pilot laboratories: [IHPE](#), [LGDP](#)
- Scientific areas: molecular biology, proteomics, bioinformatics, imaging.
- Equipment: high-throughput molecular analysis, protein extraction, separation and revelation equipment, new generation sequencing, confocal microscopy.

[more info](#)

ENRMAT (C2M-CESP) : ENERGIES RENOUVELABLES, MATÉRIAUX, APPLICATIONS ET TRANSFERTS



The C2M is a multidisciplinary centre that provides research laboratories and industrials (in the energy, geology and environment sectors, or units working in prehistory) with analytical resources for characterising materials. Although these all appear to be separate areas, research being conducted into industrial processes, historical heritage and natural heritage often require the same types of resources. The C2M platform complements the [SOCRATE](#) (Solar Power), BIO2MAR and TECNOVIV platforms: it focuses on material aspects (industrial or natural solid matter), whereas the other two are more associated with biology. This centre operates on a tariff basis, the aim being to minimise access



costs for the site's laboratories, while at the same time enabling industrials and other laboratories to use its special analysis services.

- **Joint research projects:**UPVD - CNRS

- **Pilot laboratory:**[PROMES](#)
- **Scientific areas:** energy (solar power, more specifically), geosciences, environment, prehistory
- **Equipment:**scanning electron microscope, central scanning and microanalysis microscopy service (SMEBM), transmission electron microscope, RX diffractometers, nuclear magnetic resonance (NMR), nano-indenter (mechanical measurements), atomic force microscope.

CREM-IEEM: MARINE ENVIRONMENT INTERVENTION AND EXPERTISE



The CREM-IEEM platform is attached to the CEFREM. France's national centre for scientific research (CNRS) and the UPVD serve as its supervising authorities.

It was set up with support from the commune of Le Barcarès in southern France which hosts it.

This location between a lagoon and the sea is ideal and will enable research to be carried out into marine biodiversity, marine protected areas, artificial coral reefs and ecological restoration. Other areas of research include the hydro-sedimentary evolution of the coast and the coastal system as a whole.

These programmes involve major fieldwork with numerous scientific dives, excursions on various boats (INSU, Comex), field measurements, digital mapping and anthropic usage surveys. Scientific dives are carried out for the CEFREM's research, teaching and training purposes.

- Joint research projects: UPVD - CNRS
- Pilot laboratory: [CEFREM](#)
- Scientific areas: ecological restoration, evolution of the coast and of the coastal area
- Equipment: fish farming areas, complete scientific diving kits, semi-rigid inflatable boats

[more info](#)

Date of update June 22, 2015



CONTACTS

BIO2MAR

nyree.west@obs-banyuls.fr
suzuki@obs-banyuls.fr

BIO-ENVIRONNEMENT

EnRMAT (C2M-CESP)

[Laurent Thomas](#)

CREM

[Philippe Lenfant](#)